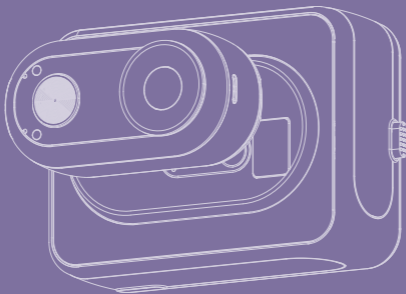


USER MANUAL

apexcam K70



Before recording, you should first read the following:

- Security Measures
- Preparations
- Operating Instructions

How can you contact us?

Please scan the official WhatsApp code, our customer service will reply to you with in 24 hours!



Connect to your mobile phone via Viipulse

Search for Viipulse in the App Store or scan the QR code to download Viipulse and install it.

Scanning here



iPhone & Mac
Higher than iOS11.0 &
macOS11.0



Android 4x Quad-Core devices
Higher than Android 7.0

Contents

OVERVIEW OF CAMERA	06
OVERVIEW OF ACTION POD	08
BEGINNING	11
Micro SD Card.....	11
Charging.....	11
Power on/off	12
Recording Video.....	13
Photo.....	14
STANDARD ACCESSORIES	14
Magnet Pendant.....	14
QUICK RELEASE MOUNT	15
Magnet Easy Clip.....	16
Waterproof Case.....	17
CONNECTING TO WIFI APP	19
Download and Install Viipulse app.....	19
Turn On / Off Camera Wi-Fi.....	20
Connect to the Viipulse APP	20
DOWNLOAD、PLAYBACK、DELETE YOUR CONTENTS	22
Download/playback/delete files on APP.....	22
Download/playback/delete files on computers and other devices.....	22

Security Measures

Before using the equipment, please make sure you are familiar with its safety measures. If you see any malfunctioning equipment, please contact customer service: supports@apexcam.com



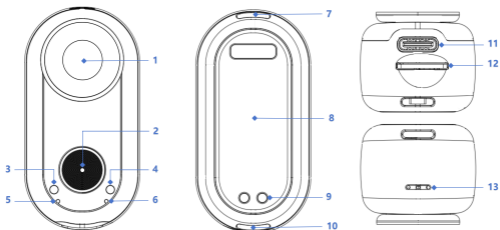
Warning: Follow the instructions below to protect against fire, high heat, chemical leakage and electric shock.

- Only use the supplied battery, charger and accessories. This camera contains high-precision electronic circuitry. Do not attempt to disassemble the camera yourself. Failure to do so will void the warranty.
- Do not short-circuit, disassemble or modify the battery. Do not expose the battery to heat. Do not expose the battery to fire or water. Do not subject the battery to strong physical shocks.
- If overheating, smoke or soot is generated while charging the battery, disconnect the battery charger from the power supply immediately to stop charging. Failure to do so may result in fire or electric shock.
- Remove the battery immediately if there is any leakage of fluid, change in colour or shape, or smoke. Avoid contact of leaking battery fluid with eyes, skin, and clothing. Contact with battery fluid may cause blindness or skin problems.
- Store the equipment in a cool, dry and dust-free place. Do not use the equipment in an environment other than -10 to 40°C. Otherwise, the equipment may be deformed and the insulation may be damaged, resulting in a fire or electric shock hazard.
- It is normal for the device to get hot when recording 4k video. It gets hotter when using the device in very hot places. The selfie stick is recommended for people with very sensitive skin.

- Keep the device out of reach of children and infants. Straps or cables may pose a choking, shock, or injury hazard to children. Swallowing camera parts or accessories may also pose a choking or injury hazard to children or infants.
- If this product is to be used by children, an adult will need to fully explain its use. Children should be supervised when using this product. Improper use may result in electric shock or injury.
- Do not store the camera near equipment that generates strong magnetic fields such as magnets or motors. Also, do not store the camera near equipment that emits strong radio waves such as large antennas. Strong magnetic fields can cause the camera to malfunction or destroy image data.
- It is recommended to clean the unit after use. Periodically remove dust from around the lens and screen with a dry cloth.
- By using this product, you acknowledge that you have read, understood and accepted the general terms and conditions of this policy and all instructions.

OVERVIEW OF CAMERA

Camera Introduction



- ① Lens
- ② Camera Button
- ③ Blue Light (Wi-Fi on indicator)
- ④ Green Light (Rec.indicator)
- ⑤ Red Light (Charging indicator)
- ⑥ Red Light (Low Battery Indicator)
- ⑦ Mounting Port 1
- ⑧ Magnetic Back Board
- ⑨ Charging Point (only for action pod)
- ⑩ Mounting Port 2
- ⑪ USB-C Port(for Charging/ Data)
- ⑫ Micro SD Card Port
- ⑬ Internal Microphone

⚠ Note:

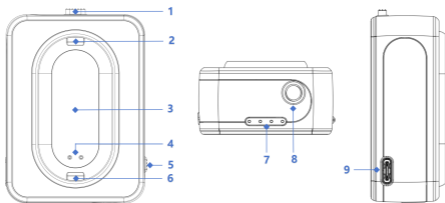
The camera is equipped with a built-in strong magnetic module. Patients wearing pacemakers are not allowed to use it!

■ Camera Specification

Input	5 V 1~2 A
Video Resolution	4K
Gyroscope	6-axis gyroscope
Wi-Fi	Embedded WIFI module
Speaker	Internal buzzer
Memory	Support U3 grade Micro SD card (32G~256G)
Working Temperature	0°F to 104°F/0 C to 40 C
Charging Temperature	0°F to 104°F/0 C to 40 C
Waterproof Degree	30M with waterproof case
Battery Capacity	490 mAh
Size	50mm*26mm*23mm
Weight	31 g

OVERVIEW OF ACTION POD

Action Pod Introduction



- ① Release Button
- ② Latch 1
- ③ Magnetic Plate
- ④ Charging Point (for camera)
- ⑤ Battery Prompt Button
- ⑥ Latch 2
- ⑦ Battery Indicator
- ⑧ 1/4 Mounting Point
- ⑨ USB-C Charge port

Tips:

- Click the charging button to activate charging, the battery level indicator light will turn on, double-click the charging button to stop charging, and the battery level indicator light will turn off.
- Utilize the 1/4 mounting point on the bottom of the Action Pod, if needed, with other accessories, such as a selfie stick.

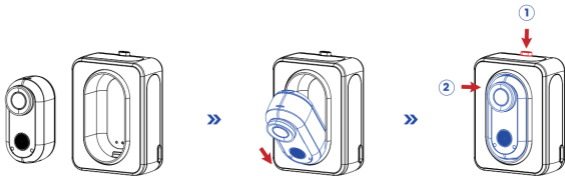
Action Pod Specification

Input	5 V 2 A
Working Temperature	0°F to 104°F/0°C to 40°C
Charging Temperature	0°F to 104°F/0°C to 40°C
Battery Capacity	1300 mAh
Waterproof Degree	Non Waterproof
Size	66mm*48mm*26mm
Weight	56.5 g

Camera Installation

● Install the camera onto the action pod.

1. Insert **Mounting Port 2** into the **Latch 2** of the action pod at approximately 20 degrees, ensuring that the magnetic contacts on the camera and action pod are aligned.
2. Press the **Release Button** of the action pod to make the **Latch 1** of the action pod pop open, and slowly place the other end of the camera flat on the action pod. (refer to step 1)
3. Release the **Release Button** and gently press the camera from the top to ensure that the action pod's **Latches** is securely fastened to the **Mounting Port 1** near the camera lens. (refer to step 2)

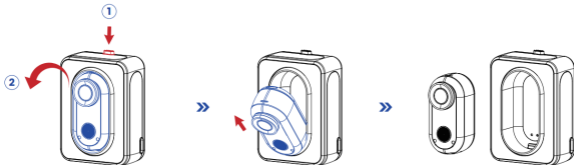


● **Remove the camera from the action pod.**

1. Press the **Release Button** on the action pod to release the **Latch 1**;
(Refer to Step 1)
2. Gently lift the camera 20 degrees from the **Latch 1** of the action pod;
(Refer to Step 2)
3. Take the camera out of the **Latch 2** of the action pod.

Tip:

Do not forcefully take the camera vertically, otherwise there is a risk of latches breaking.



Beginning

■ Micro SD Card

Use brand name memory cards that meet these requirements:

- micro SD, micro SDHC, or micro SDXC
- U3 rating
- Capacity up to 32GB ~ 256G (FAT32)

Tips:

- When the micro SD is first-used in this camera, the camera will automatically format the micro SD card, which will erase all contents. Please make sure that there are no other important files in the micro SD before use to prevent them from being deleted.

■ Charging

To get a better camera experience, please fully charge the camera for the first time by the following methods:

1. Connect the camera to USB power supply (5V/1-2A commended) with type-C cable in box. While charging, the indicator light on camera will be solid red. Once the red indicator light turns off, the camera is fully charged.
2. Place the camera into the action pod in correct installation method.

Tips:

When charging, the camera charging indicator light will remain red. If the camera charging indicator light and the battery indicator light of the action pod are not on, you can click the charging button on the action pod to start charging the camera. At this time, both the camera charging light and the battery indicator light of the action pod will light up.

Once the camera indicator light goes out, it means that the camera is fully charged. If you want to stop charging the camera, double-click the charging button on the action pod. At this time, both the camera charging light and the battery indicator light on the expansion pod will turn off.

 **Notes:**

- Connect to the action pod in standby mode, the camera will automatically shut down after 5 minutes, but it can still be charged.
- It is recommended to use a dedicated charger to charge the camera separately. If it is connected to a USB port on a computer or other portable power source, the power source may not be sufficient to charge both the camera and the action pod simultaneously.
- When the camera is installed in the expansion cabin and needs to be charged with an external power source, please directly connect the external power source to the USB interface of the expansion cabin to charge both the expansion cabin and the camera synchronously.

 **Power on/off**

 **Power on:**

Press and hold the camera button for 2 seconds: After the blue and green lights remain on for 5 seconds, the blue and green lights flash alternately three times, and then the green light remains on. When the camera emits a startup sound, it indicates that the camera has been turned on.

● **Power off:**

Press and hold the camera button for 2 seconds: The blue and green lights flash alternately three times before turning off. When the camera emits a shutdown sound, the camera is already turned off.

Tips:

- To extend battery life, if there is no operation within 1 minute after turning on the camera, it will enter sleep mode instead of being turned off. Please press and hold for 2 seconds to turn off the camera.
- When the camera is in sleep mode and connected to the expansion pod or external power source, it will enter standby mode and automatically turn off after 5 minutes.
- To extend battery life, please ensure that the device is turned off when not in use or stored for a long time

■ **Recording Video**

● **To start recording:**

Short press the camera button. When the green light of the camera flashes and emit a beep, the camera starts recording.

● **To stop recording:**

Short press the camera button again while recording. The green light stops flashing and beeps three times, indicating that the recording has stopped.

Tip:

When the camera is in sleep mode, short press to quickly wake up and start recording videos

■ PHOTO

● To take a photo:

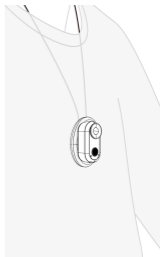
Verified your camera connect with the Viipulse App and in photo mode, press shutter icon on your phone, when the camera will emit a beep, a photo has took.

STANDARD ACCESSORIES

■ Magnet Pendant

● How to use: (As shown right)

- 1.Adjust the length of the lanyard by turning the knob on the magnet pendant;
- 2.Wear the magnet pendant inside your clothes with the camera image facing forward;
- 3.Adjust the magnet pendant to the appropriate shooting height as needed;
- 4.Attach the camera to the magnet pendant over your clothes



⚠ Safety Warning!

The Magnet Pendant have lanyard, the lanyard may cause entanglement around the neck of children, posing a fatal risk of suffocation! Children should use them under adult supervision to avoid strangulation or suffocation. Please keep the product out of reach of children and store it promptly when not in use!

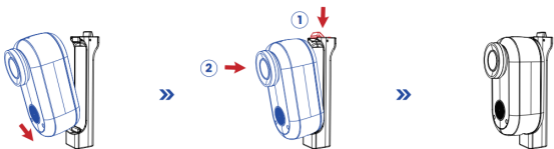
Quick Release Mount

● How to install

1. Press and hold the lock on the top of the Quick Release Release Mount to make the lock pop open (Please refer to step 1);
2. Insert the camera into the bottom fixed lock of the Quick Release Mount at an angle of approximately 20-30 degrees (Please refer to step 2);
3. Place the other end of the camera flat on the Quick Release Mount;
4. Release the lock at the top of the Quick Release Mount to close and firmly grip the camera.

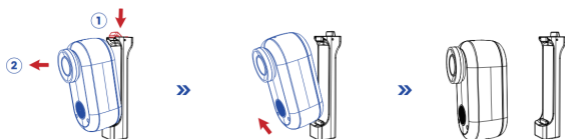
Tips:

- After installation, it is recommended to gently shake the camera back and forth to ensure that it is firmly locked and avoid the camera falling off during use.
- Utilize the 1/4 mounting point on the bottom of the Quick Release Mount, if needed, with other accessories, such as a selfie stick.



● How to detach :

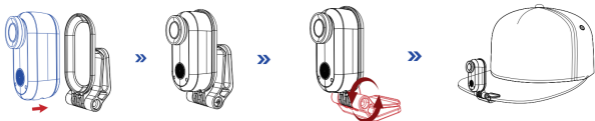
1. Press and hold the lock on the top of the Quick Release Mount to make it pop open; (Please refer to step 1)
2. Remove the camera from the Quick Release Mount; (Please refer to step 2)



■ Magnet Easy Clip

● How to use

1. mount the camera to the Magnet Easy Clip in the correct direction
2. Widen the Magnet Easy Clip and clip it onto the brim of a baseball cap or pet collar.
3. Adjust the angle of the Magnet Easy Clip as need.



! **Notes:**

The Camera, Magnet Pendant, Quick Release Mount and Magnet Easy Clip contain magnets. Keep it away from pacemakers and other devices to avoid interference.

- Do not use magnet pendant with thick clothes; it could weaken the magnetic hold and causing the camera to fall off.
- When using the above accessories with the camera, it is not recommended to use it during high-intensity activities, otherwise there is a risk of the camera falling off or damage.during jumps or sudden movements.
- when connecting the base to other accessories, ensure the camera is secure, as to avoid damage to the accessories and the camera.

Waterproof Case

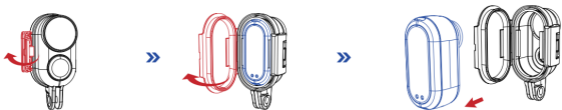
• How to install camera into waterproof case:

1. Pry open the black locking buckle on the side of the waterproof case.
2. Open the back cover of the waterproof case and insert the camera horizontally into the housing.
3. Close the back cover and ensure the silicone seal on the back cover is fully pressed against the main body of the waterproof case.
4. Fasten the black latch onto the back cover and press down the black latch.



● How to detach camera from the waterproof case:

1. Pry open the black locking buckle on the side of the waterproof case.
2. Open the back cover of the waterproof housing and remove the camera horizontally from the housing.



⚠ Usage Notes

1. In order to capture a clear video or photo, please tear off the lens protection film of the waterproof shell before use, and protect well the lens window from scratch after use.
2. Before sealing the waterproof case, keep the camera housing's White Silicone Seal Ring clean, a single hair or grain of sand cause a leak. You can test by closing the case without inserting the camera. Submerge the case completely in the water for about a minute. Remove the case from the water, dry off its exterior with a towel, and then open the case. If the interior is dry, the case is safe for use under water.
3. Before sealing the waterproof case, make sure the waterproof case is sealed well before use. If the white silicone sealing ring is found to be hardened, deformed or damaged, please stop using this water tank and replace the new waterproof shell in time
4. Please dry it in time after use, otherwise the waterproof shell metal button will dust and reduce the waterproof performance. After use in in seawater or seaside, you will need to rinse the outside of the housing with fresh water and then dry. This will prevent corrosion of the hinge pin and salt buildup in the seal, which can cause failure. Do not flush the interior with water

- When use the camera with the waterproof in low temperature, such as Winter, Rainy Day, Underwater and so on, please do the anti fogging treatment so as to avoid the blurred video. It is recommended to add anti-fog film; insert the anti-fog film into the waterproof case to prevent the lens from fogging in low temperature or humid environment;
- Keep it safe from falling and dropping and high temperature above 70°C.
- Waterproof shell is vulnerable product, we strongly recommend ,according to the usage of the environment and frequency, to replace the waterproof shell in time.

CONNECTING TO WIFI APP

■ Download and Install Viipulse app

Way 1:

Download the Viipulse App to your phone from Google Play or Apple App Store.



Way 2:

Scan the QR code below to download the Viipulse App or to your phone.



■ Turn On / Off Camera Wi-Fi

- 1.Verified the camera is turn on, double press the button to turn on the camera's Wi-Fi. When the blue light flashes, it indicates that Wi-Fi is being turned on. Please wait for about 6 seconds until the blue light stays on, indicating that the camera's Wi-Fi is turned on.
- 2.Verified the camera's Wi-Fi is on, double press again the button to turn off the camera's Wi-Fi. If the the blue light is off, the camera's wifi is off.

■ Connect to the Viipulse APP

- 1.Turn on Camera's Wi-Fi;
- 2.Turn on Wi-Fi Setting of your phone, connect to the Wi-Fi SSID named "K70_xxxxxx (Random serial number)";
- 3.Enter the password: "12345678";Launch the app "Viipulse"on your phone.

Tips:

- When the camera Wi-Fi is turned on and there is no APP connection within 3 minutes, the camera will automatically turn off Wi-Fi.
- It is recommended to turn off the camera WIFI to maximizing battery life when not using the app.

⚠ Notes:

- To ensure a stable WIFI signal connection between the phone and the camera, it is recommended to turn off the mobile network on the phone after a successful WIFI connection between the phone and the camera.
- Once the camera's WiFi is connected, it will give you a "no Internet connection" or "weak security" notice, because your mobile signal is blocked. You can ignore it and continue the application to contact this connection screen for reference only.

- Camera WiFi is a point-to-point signal source that only supports one smartphone connection at a time, and does not support two or more smartphone connections. If two mobile phones are simultaneously enabled for WiFi, one phone will successfully connect to the camera's WiFi, while the other will no longer be connected to the camera and may even interfere with signal transmission.
- The WiFi bandwidth of the camera is relatively narrow, and its signal is affected by factors such as distance, other signals, electromagnetic waves, and obstacles. A signal delay of 2 to 5 seconds is normal. The WiFi distance is approximately 5 to 8 meters.
- When the phone and camera are connected via WiFi, the camera's battery level will increase. The temperature of the camera will rapidly increase, and the consumption of the camera battery will also increase. This is a normal phenomenon.
- Due to the wide variety of mobile phones in the market and the constant updates of mobile phone systems, WIFI applications require time to synchronize updates. If WIFI applications are not compatible with your phone, please let us know your phone model and system version information, and we will synchronize your phone as soon as possible.
- If you find that your phone cannot connect to the camera's WIFI, please confirm if your connection is correct. If so, it still cannot be connected. Please remove the camera's WiFi SSID from your phone's WiFi settings and reconnect. If necessary, you can also remove the WIFI application from your phone, download and reinstall it

DOWNLOAD、PLAYBACK、DELETE YOUR CONTENTS

■ Download/playback/delete files on APP

Tips :

- Due to limitations in camera WIFI bandwidth, downloading or replaying files larger than 1GB, files longer than 5 minutes, or multiple files downloaded simultaneously may take several minutes to load. Connecting the camera to a computer for faster download and playback will provide a better experience.
- Due to limitations in camera WIFI bandwidth and bitrate, the camera may lower the preview resolution and online playback resolution. In order to obtain true resolution, please download before playback.

■ Download/playback/delete files on computers and other devices

● Method 1

To download/playback/delete videos and photos on a computer, you must first transfer these files to the computer.

To use the card reader (sold separately), connect the card reader to the computer and then insert the micro SD card.

● Method 2

Ensure the camera is powered on. First, connect the USB end of the data cable to the computer, then insert the Type-C end of the cable into the camera. At this point, the camera will function as an external hard drive, allowing you to transfer multimedia files from the camera to the compute

 **Notes:**

1. When connecting to the computer, ensure the camera is powered on; otherwise, the computer cannot recognize or read the camera information.
2. The playback resolution depends on the device's resolution and its capability to play that resolution.
3. QuickTime Player has excellent compatibility with MOV format video files. We strongly recommend using QuickTime Player to play video files on your computer



Viipulse

Scan QR code
Download Viipulse
Appon your smartphone



WhatsApp

Scan QR code
Add Apexcam official
customer service